



IN SPI RE

2

de compagnie
Inspiring furniture for home and contract

de compagnie

We source and tailor contract furniture for hospitality, corporate and private projects.

Together with you we dream, define and deliver the places where you eat, sleep and work.

De compagnie is first a family story and we are proud of living today by the same values we started with, 20 years ago. We since grew across Belgium and internationally, around the belief that with the right level of collaboration and passion, no project is too big.

From the first look at your plans to the last piece of furniture being delivered and installed, from your business to your home we come in and help you bring your dreams to life.

We care, and it shows.

CONTENT

Hospitality

Hotel Riga	p.6
Tinèlle	p.8
Uurblauw	p.10
Gasthofhoeve	p.12
Hotel Jerom	p.14
Crèmerie François	p.16
Puurs Lof	p.18
Fragma	p.20
Huis Van Wonterghem	p.22
Villa l' Aurora	p.24
Kasteel Sint-Michiels	p.26
Bistro Julienne	p.28
Thon Hotel Bristol Stephanie	p.30
Beaufort	p.32
Upton	p.34
Stacks	p.36
A-stay	p.38
Boa-Bao	p.40

story : We Source p.42

Le sanglier des ardennes	p.44
La Bru'sserie	p.46
Wagyu Grill	p.48
Manhattn's	p.50
Il Forno	p.52
De Met	p.54
The Chick	p.56
Nuance	p.58
Fiera	p.60

Healthcare

Domein Polderwind	p.64
WZC Zilversterre	p.66
Brasserie Wullebeeck	p.68
Budalys	p.70

Corporate

Futurn	p.74
Coffice	p.76
Walkie Talkie	p.78
Assos Boutique	p.80
Mania-K	p.82

story: We Tailor p.84

Group De Ceuster I DCM	p.86
Era Vastgoed	p.88
De Hoorn	p.90
Schaft	p.92
GSJ Advocaten	p.94
Stadswbader	p.96

story: We Care p.98

Workero	p.100
Jet Import	p.102
Melisana	p.104
Fosbury & Sons	p.106

Sports & Leisure

Lux	p.110
Boa Karaoke	p.112
Maison De La Poste	p.114
Lago	p.116

Private

House SA	p.120
House S	p.122
House A	p.124
House 0A	p.126

HOSPITALITY



HOTEL RIGA

Antwerpen



In contrast to common believe Hotel Riga is not named after the capital city of Latvia. It is the merchant in travel suitcases, Marcel who gave the shop his family name. Since the beginning of the 20th century the place was well known throughout the city of Antwerp and beyond. This heritage has been respected in the design by Wastiau architects. Several elements were preserved, and new ones added to the concept. The beautiful hotel has 12 different styled, luxury rooms and a spacious food bar downstairs.

design: Wastiau
photography: Jeroen Verrecht

TINELLE

Mechelen



This unique location that used to be a military hospital in the 17th century has recently been transformed into a cultural hotspot. They have created a lively place where you can enjoy the classic French-Belgian cuisine with a gastronomic twist from the hands of renowned chef Ken Verschueren. No imposed menus, no waiters in stiff black and white, no hassle. Just experience a nice dinner in an environment that provides all the right ingredients for it.

photography: Pieter D'Hoop



UURBLAUW

Leuven



Uurbloauw is a new concept of dining with a living room kind of vibe. The idea is that you rent out the place for business related parties or private gatherings. Private dining up to 30 people on a gastronomic level. All this takes place in a unique stylish setting with a beautiful garden which makes every experience unforgettable.

design: Studio Boite
photography: Hannelore Veelaert



GASTHOFHOEVE

Zemst



Gasthofhoeve is housed in an old farmhouse dating back to 1662. It has recently been rebranded to a sustainable and ecological restaurant. All the ingredients are homegrown in their own garden or in their high tech 'Urban Cultivator', which functions as a small in-house greenhouse. The interior designer translated this same philosophy into the design of the interior. Light, ecological and airy.

design: AnA Interieur
photography: The Fresh Light

HOTEL JEROM Kalmthout



Hotel Jerom is located at 'de Kalmthoutse heide' and also close to the port of Antwerp and the border with the Netherlands. It's the ideal location for a quiet retreat in nature or a meeting in a calm setting. The soft tones of the surrounding area are translated in the interior, which creates a perfect balance.

design: Detail Concept



CRÈMERIE FRANÇOIS

Sint-Niklaas



With almost one hundred years of experience Crémèrie François is the benchmark in artisanal ice cream in Belgium. Using cowmilk straight from the farm and only natural ingredients they make a healthy and exceptional product full of quality and taste. A visit here is not only a joy for the taste, but also for the eye. The owners have a great taste for contemporary and timeless design which brings the whole experience to a higher level.

photography: Sylvie Vandewalle



PUURS LOF Puurs

After 10 years of successfully running their restaurant, Bart and Inge wanted to rebrand their business with one goal in particular: Less tables, more class and a reopening within 3 weeks. They were more leaning to an easier going living room kind of feel, with more refinement than before. A better mood equals better quality.

design: AnA Interieur





FRAGMA

Leuven



Fragma is housed in a townhouse from the start of the previous century. It received a new unpolished appearance which makes it an ideal hiding spot from the busy heart of the city of Leuven. Together with the owners and the interior designer we translated that same feel in the choice of the furniture. The soft tones of the oak used in the chairs and table tops reflect the calmness and purity.

design: Studio Haver
photography: The Fresh Light

HUIS VAN WONTERGHEM

Kuurne



For more than 75 years Huis Van Wonterghem and Maelstede have been providing the most pleasant, exclusive and well-organized parties and events. As a family business, they have been guaranteeing a personal approach for over three generations with an exceptional eye for detail. These beautiful locations are equipped with an impressive inner garden and every comfort imaginable.

photography: Bram Verheyen



VILLA L'AURORA

Leuven



Don't we all just dream of beautiful Italy once in a while. Just think of the historical culture, the beautiful cities, the pure white beaches and especially the delicious food! Villa l'Aurora in Leuven is that little piece of Italy that you occasionally need! The spicy scents and irresistible dishes immediately take you on a tour of the land of gnocchi, fettuccine and linguine.

design: Studio Boite
photography: Hannelore Veelaert

KASTEEL SINT-MICHIELS

Sint-Katelijne-Waver



Kasteel Sint-Michiels is a beautifully restored historic castle provided with all the modern comfort. It has been subdivided into 5 different functions. There is a lounge, a restaurant, meeting rooms, a coffee lounge and a beautiful orangery overlooking the tranquility of the park. This location lends itself ideal for parties of all kinds, meetings or just a nice dinner in the restaurant.

design: Eef Debeuf
photography: Sisera Groep

BISTRO JULIENNE

Herentals

For over 20 years Daemshof was an exceptional event location, ideal for all kinds of parties. Two years ago, the owners decided to rebrand and flip their focus from an event location to a gastronomic restaurant. Today Bistro Julienne is all about love for honest quality products, craftsmanship and creativity of the chef. All this leads to a culinary top experience to share with family and friends in a quiet and green environment.

design: Karin Janssens
photography: Veneuz magazine



THON HOTEL BRISTOL STEPHANIE

Brussel



After several years of intense cooperation, we have had the pleasure last year to work together on the renovation of another Thon hotel: Bristol Stephanie. In addition to the upholstered items in the bar, restaurant and lobby, we provided the colourful chairs and folding tables in the renovated meeting rooms. These meeting rooms are fully adaptable to the clients needs in settings as well as volume.

design: Trond Ramsøskar



BEAUFORT

Cadzand



What a unique location... The terrace of this sublime bistro overlooks partly the dunes and partly the beach. This is where you want to be for the ideal drink by sunset accompanied by some delicious finger food. The menu is provided by local suppliers and fishermen who deliver their catch on a daily base through the local harbour.

UPTON

Antwerpen



At Upton the focus is a contemporary kitchen with ingredients bursting with flavour. Italian influenced with an occasional Eastern twist can be found on the menu through the chef's background and travels. Those who visit here can expect a culinary experience with a personal touch.

design: Maud Mullenders
photography: Dominic Franssen



STACKS

Antwerpen



Three brothers in Antwerp with a crazy love for pancakes and one simple goal... STACKS, ON STACKS, ON STACKS of pancakes. With the drive from these three, Antwerp has a new hotspot in town. For the design, Studio Boîte was inspired by the original language of a 'stack' of pancakes: Fluffy, rounded, one on top of the other. Recognizable references to the delicious pancakes in the interior, in combination with a subtle yet elusive colour palette.

design: Studio Boîte
photography: Hannelore Veelaert



A-STAY

Antwerpen

40

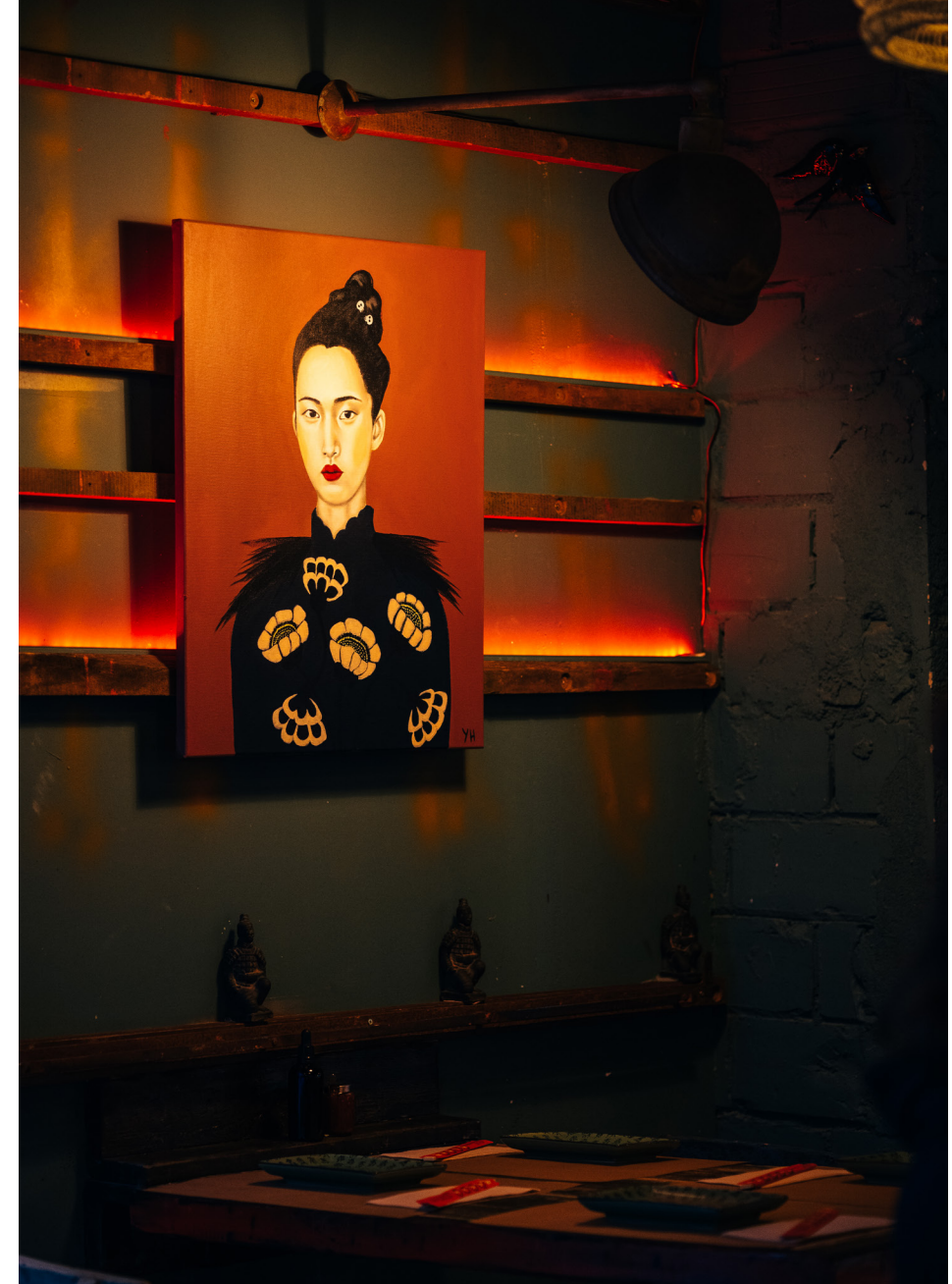
High tech, low maintenance and ecological for a relaxed stay or a productive meeting. You can find it all in this new Belgian hotel concept. Everything is organized through the A-stay app on your mobile. You book the room and add your preferred add-ons. There is a 24/7 food self-service with fresh and local ingredients. You have recreational spaces like a self-service bar and lounge and several meeting rooms to get some work done. In short, this hotel is ready for the next century.

design: Detail Concept
photography: Jente Willems



BOA-BAO

Barcelona



Boa Bao is a unique Asian food concept with two locations in Portugal and a new venue in Barcelona. Immaculately executed, with respect for the original recipes, the authentic food selection is prepared by experienced chefs with the finest fresh ingredients 'on the spot' and 'à la minute'. Dining here is a full sensory experience. On top of that on the ground floor they have a very cosy cocktail bar with a vast choice of original exotic cocktails that bring you straight in the right atmosphere.

design: Pio Silva
photography: Estúdio Cozinha

WE SOURCE

As a fifth generation with 25 years of experience we source the best furniture manufacturers worldwide. Times are changing, and they are changing fast. Today's consumers are well-informed and are always carrying an endless source of real-time information in their pockets: their smartphones. But in times where everything seems accessible to anyone at any time, we believe it is most important to be able to rely on a trustworthy partner when taking important decisions. Our partners are chosen with care, as they have to achieve the goals we set and keep the promises we make. Some have been with us for 25 years, others come and go because we always seek better solutions and cater to changing trends. Most of our brands are still family-owned, as over the years we have found out that these companies assure the greatest reliability, commitment and over-all quality. Over time we learned that in the end not only the product, but also the people behind it make the difference. Whether we propose a basic school chair or a refined artisanal design piece, we choose those partners who bring value for money and share our passion to create beauty and quality.



Sustainability: MATER

Mater is a conscious and ethical design brand with a strong design philosophy and great craftsmanship. Through collaborations with an external base of established and fresh design talent, Mater combines exclusive high-end furniture and lighting, with working methods that support people, local craft traditions and the environment. The aesthetic of Mater has clear references to Scandinavian minimalism and the designs are all made with sustainably or ethically sourced materials.

Recently they launched the "Ocean" collection that looks back into classic design traditions, truly rethinking the rationale behind the relaunch of design classics. Originally designed in 1955 by Nanna and Joergen Ditzel for their own personal outdoor use, "Ocean" represents sustainable and innovative thinking and was awarded Wallpaper* Magazines Design award in early 2019. The collection is made of used fishnet, hard plastic waste and a light metal frame.

2.



1.

Industrial design: PEDRALI

Historically our most important partner since inception of our company has been Pedrali, a family owned Industrial Design company that has set the benchmark in the contract market for more than 50 years.

Established in 1963 in Palazzolo sull'Oglio, Pedrali is an Italian company that produces contemporary design furniture for contract and residences at their headquarters near Bergamo. Their collection is the result of rigorous and careful research that is realized in the form of design products made of metal, plastic, wood and upholstery.

Pedrali believes in producing durable products, made from high quality raw materials that are recyclable and eco-compatible. They ensure sustainability from the design stage up until the end production phase with a 100% made in Italy result.

Craftmanship: BAXTER

The story of Baxter is all about the DNA characterizing the Italian family companies, sprouting from the love of a material and carrying around the manufacturing culture and craftsmanship. This family story starts from the hide passion and grows thanks to the human capital. It is quite a young story, dating back only to 1990, but looking way back in time, to a century-old entrepreneurial tradition, flourished on the Brianza fertile land, that has always been producing the excellence in high-end furniture and that today pursues in its creations for all the beauty lovers. This is a 100% Italian story beaming into an International panorama. One that starts from the reinterpretation of the English taste and evolves, through the art of leather working and shaping, into the production of unique collections.

1. production image Pedrali
2. Ocean collection, Mater
3. high quality leather - production image Baxter

3.



LE SANGLIER DES ARDENNES

Durbuy



Welcome to Durbuy, self-declared smallest city in the world. In medieval times Durbuy was an important centre of commerce and industry. Nowadays tourism and recreation are its main activities. For decades Le Sanglier des Ardennes stood proud as a landmark in the Ardennes. Today the interior is a nice mix of authenticity and modernism. The owners are proud to welcome you for a gourmet dinner or refined snack. The place lends itself ideally both for families or seminar, for a romantic meal or even a sporting trip with friends.

design: inside
photography: Zeger Vanhaelemeesch

LA BRU'SSERIE

Durbuy



At the iconic Le Sanglier des Ardennes hotel in Durbuy chef Wout Bru launched La Bru'sserie, a culinary high-quality tapas and food sharing restaurant in a delightful setting. The transformation of the original brasserie into the trendy no-nonsense La Bru'sserie was the first important step in the relaunch of this beautiful hotel.

design: inside
photography: Zeger Vanhaelemeesch



WAGYU GRILL

Durbuy



In addition to his two existing restaurants in Durbuy top chef Wout Bru has created a new food concept: grill restaurant Wagyu. Here you can eat authentic meat and fish dishes prepared on the grill that is centrally placed in the very nice, somewhat urban decorated restaurant. Make no mistake, the dishes come from the grill, but thanks to the chef they get a nice gastronomic twist.

design: inside
photography: Zeger Vanhaelemeesch



MANHATTN'S

Gent



This project in the Graslei is the most iconic of all Manhattan's restaurants. This beautifully renovated ancient grain storage warehouse reminds us of SoHo & The Meatpacking District in Manhattan. You can enjoy the New York vibe while watching the boats float by at this fantastic historic location in the heart of Belgium's most artistic city.

design: WeWantMore
photography: BILD studio

IL FORNO

Zandhoven



In Zandhoven Il Forno has always been known as a fine dining Italian restaurant. The key to their success is quality, fresh ingredients and an indisputable service. Two years ago, they moved to a pop-up address for a total makeover of their current location. The building was stripped down completely and transformed into the cosy and luxurious restaurant as it is today.

photography: Studio PSG



DE MET Vilvoorde



The listed building in which De Met is housed is the showpiece of De Grote Markt in Vilvoorde. De Met itself occupies the ground floor and the first floor of the monumental building and has a terrace with 80 seats. From true classics to the more refined cuisine De Met spoils your taste buds with meat and fish dishes of the highest quality in a beautiful industrial setting.

design: AnA Interieur
photography: The Fresh Light



THE CHICK

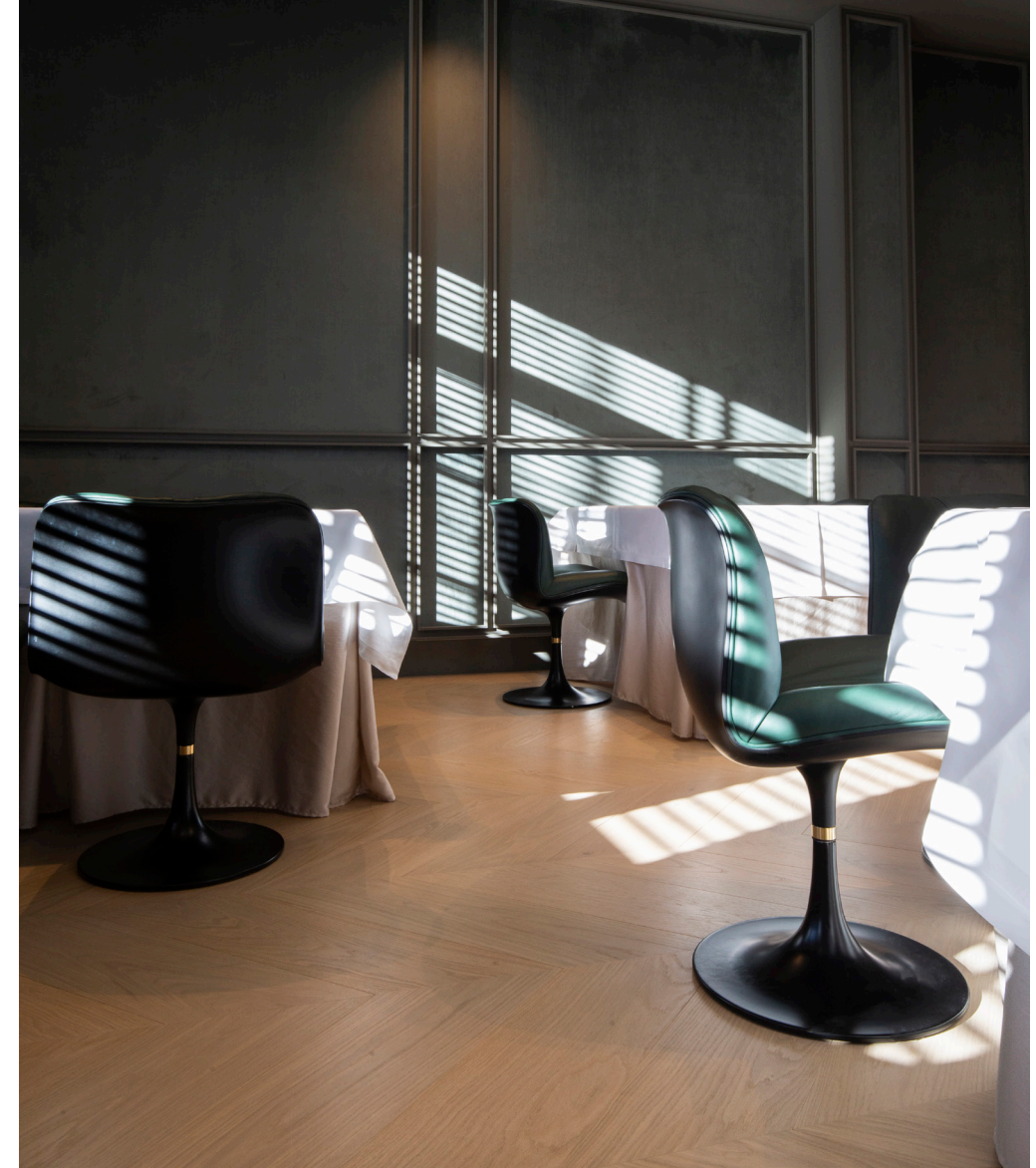
Mechelen



Three young entrepreneurs have recently purchased de Congregatiekapel on the site of the cemetery of Sint-Rombouts in Mechelen. In this marvellous historical building they opened Taste M, a multipurpose concept. On the ground floor there is The Chick, a chicken rotisserie equipped with Josper grill in a large open space with lots of natural light and a big terrace. Beneath the restaurant there is The Cellar, an intimate wine bar where wines are paired with the most delicious cheeses. The Chapel is used as a multifunctional event room with space for receptions, ceremonies, lectures or concerts. A unique concept as these three projects are located under the same roof, but operate as separate modules.

NUANCE

Duffel



Nuance is all about class and cosiness. They serve the finest dishes in a beautiful setting with an impeccable service. Nuance is a bit of Paris with a personal twist, that is why after 7 years they have opted for a new interior and a new house style. But the core remains the same, passion and gastronomy on the highest level.

design: Dieter Vander Velpen Architects
photography: Sylvie Vandewalle

FIERA

Antwerpen



After 20 years of vacancy and 3 years of renovation de handelsbeurs is ready for the 21st century. Thanks to private investors with courage and a great plan it can pick up its role as economic, social and touristic hub in the heart of Antwerp. Next to the Marriott hotel with 139 rooms, an underground parking for 293 cars and the majestic central event room, there is de schippersbeurs where the most beautiful cosmopolitan bar and restaurant was recently created by J&M catering, who is also the exclusive event caterer for this location. One of Antwerp's most beautiful and historical places has been restored to its former glory and has found its function back as it has always been a place where people and products came together.

design: Cathérine Verbraeken
photography: Syllie Vandewalle

HEALTHCARE



DOMEIN POLDERWIND

Zuienkerke



With this first Care Hotel, Rode Kruis Vlaanderen offers a place for relaxing holidays for people with physical limitations or health problems. The hotel offers place to 92 people in a beautiful setting along the water. The circular volume encloses an inner patio where residents and visitors find shelter from the harsh sea breeze. The ground floor is permeable and transparent. A walking path runs right through the building. The public square and the communal functions on the ground floor - such as cafeteria, wellness and fitness - emphasize the holiday feeling.

design: Polo Architects
photography: Stijn Bollaert





WZC ZILVERSTERRE

Gent



WZC Zilversterre has been built according to the principles of the healing environment, a concept that contributes to the physical and psychological well-being of the residents. Peace, safety and comfort are the pillars reflected in the customer-friendly reception, the well-arranged layout for easy orientation, the natural look of materials used and the soft tone colour palette. Another principle in this kind of architecture is to give the residents as much contact as possible with the outside world. Therefore a green, pleasant garden was created around the building with comfortable walking paths and a penthouse area. On top of the building there is a huge roof garden with a view of Gent.



BRASSERIE Niel WULLEBEECK



More than just a brasserie, this concept was born in a cooperation between the owners of WZC Familiehof and those of restaurant Toque-Tok. The business wants to become a hotspot for the residents of the nursing home above as well as for anyone who wants to take a break for lunch or just a drink. In a homely, contemporary setting Brasserie Wullebeeck welcomes you for a pleasant lunch, a tea-time moment in the afternoon or a nice chat with friends or family. They bring a total experience for everyone who stops by: fine food, take-away and fashion boutique all under one roof.

design: Huiswerk
photography: Eveline Van Vlaenderen

BUDALYS

Kortrijk



Budalys houses 48 high-end service apartments with care function in the middle of the busy city centre of Kortrijk, surrounded by water and greenery. All apartments are fully equipped and energy efficient. They have a spacious terrace with a view over the city and the banks of the Leie. Bistro Budalys, a buffet bistro and ALTA, a take-away, are located on the ground floor. Soft, round shapes and lines are reflected in the counter, the lamps, closures and even the floors. They emphasize the well-being feeling, the tranquillity and the unique character of ALTA and Bistro Budalys and connect the two concepts into an organic whole. The result is one functional environment where architectural know-how is deeply embedded and where young and old can meet in an informal setting.

design: Ensemble
photography: Klaas Verdrui | Venuez

COR
POR
ATE



FUTURN

Kortrijk



In a world where the usable space is becoming scarce, one needs to think well about what the company of the future should look like and where it is housed. Futurn revitalizes old business premises and sites instead of taking up new space. They are reviving lost projects through demolition, renovation and new construction. They transform them into modern, multifunctional, sustainable and socially responsible business parks with the lowest possible ecological footprint.

design: CO.STUDIO
photography: Studio PSG

COFFICE

Mechelen

Coffice combines a nice coffee bar with healthy lunch and early apero. The location has lots of natural daylight and is organized as a very nice coworking space where you can share facilities or even organize external meetings.

design: AnA Interieur
photography: Bynoucka





WALKIE TALKIE

Gent



Walkie Talkie is a leading full-service public relations & influencer marketing agency. Their extensive network & experience helps brands generate the right attention, better reach and more relevancy. The interior design studio succeeded in translating their vision in the interior. It's fresh, hip and attractive!

design: Studio Boite
photography: Hannelore Veelaert

ASSOS STORE

Hoogstraten



After many years of enthusiastic use of this top-quality bike gear, Svajune and Wijnand went on supporting the brand by creating a Benelux webshop specifically for Assos bicycle wear and accessories. Running the web shop successfully for many years, they learned that it would be an added value to have the opportunity to physically fit the clothing. This is where the Assos store in Hoogstraten was born. The shop can be visited by appointment and you are welcomed with all Assos has to offer in quality and service.

design: Frank Reel
photography: Fotostudio Fabro



MANIA-K

Roeselare



After several years in search of the right destination the city of Roeselare decided to put up for sale the former national bank building. This is where the owners saw their idea for a new total concept come to life. The past and present match perfectly in the marvelous boutique and beautiful Mania-K café. The art deco style of the building and the modern interior come together in this marvelous, eclectic ensemble.

photography: Wim Van De Genachte



WE TAILOR

Most of our partners have a beautiful collection of furniture and offer a wide standard range in their finishing. We believe every project is a reflection of your personality and every person is unique, we don't like to do the same thing twice. Together with you, we search for that look and feel that suits your project, and where we can we give it a personal twist. We push our partners out of their comfort zone and like to personalize the furniture to your needs and desires.

Acquaintance

First, we listen to your story. We try to understand your business, your plans and your ambitions. Together with you and your architect or designer we go over the project and try to understand exactly what you are looking for. In some cases, there is already a mood-board for the project, the materials for flooring, walls and ceiling are determined and there is a plan for the set-up of the furniture. If not, no worries we can help create those for you.



Creative Process

When the plans have been rolled-out, we talk about the options: In what price-range can we offer items, what deadlines do we have to make and what kind of usage will the furniture undergo? It is clear that a public swimming pool requires a different approach than a gastronomic restaurant. The more detailed information we receive, the more precise we can make our proposal. In any case we search for different options and fill in the needs as required. This process can take from a few hours up to several months, depending on the size and the timing of the project.

We invite you to our showroom and go through the proposal, showing different items and finishings. With our unique and vast collection of materials, leathers and fabrics and the help of our professional decorators we search for the right texture and colour to match your project. If necessary, we can make a mock-up model or mock-up room to help you see the final result.



Commitment

At a certain point when deadlines come closer it is time to take the final decisions about quantities, materials and finishings. Ideally this is 8 to 10 weeks before opening, which gives us the time to order all the items and have them produced. We stock the items and when you are ready, we plan the delivery. When we make a commitment, we keep our promise and respect your deadline in any way we can. From that point on, there are no more worries for you as a client as we take care of the follow-up, the assembling and the installation of all furniture as agreed at the order. So you can sit down, lay back and enjoy your new interior.

GROUP DE CEUSTER | DCM

Grobbendonk



The compact, triangular building designed by Schellen architects responds perfectly to the southwest orientation and the existing terrain. The relationship between inside and outside plays a major role, with a lot of nature and plants. Logical, given that Group De Ceuster/DCM is active in the horticultural sector. The offices are rather private, but the ground floor has a more public character thanks to the welcoming choice of furniture. The conference rooms and the cosy in-house restaurant are open to third parties.

design: Eef Debeuf
photography: Studio PSG

ERA VASTGOED Tervuren



The ERA brokers try to guide their customers in an expert and result-oriented manner. They are a real estate agency that incorporates the land surveyor, which results in a more efficient approach to the market. The interior architect succeeded in translating that same efficiency in the interior by using a minimal approach. The returning use of materials throughout the project and the use of space in relation to the human interaction.

design: Eef Debeuf

DE HOORN Leuven



From old brewery to creative hub. Anyone who enters De Hoorn will immediately notice its new look. With a date of birth well into the 18th century the famous Stella beer was produced here. The beautiful copper kettles can still be admired. Today it is a playground for creative activity and fluid living. With interior of authenticity one gets a continuous stream of fresh ideas and... fresh beers of course. De Hoorn, a sparkling brew of our new age.

design: Studio Boite
photography: Hannelore Veelaert



SCHAFT

Antwerpen

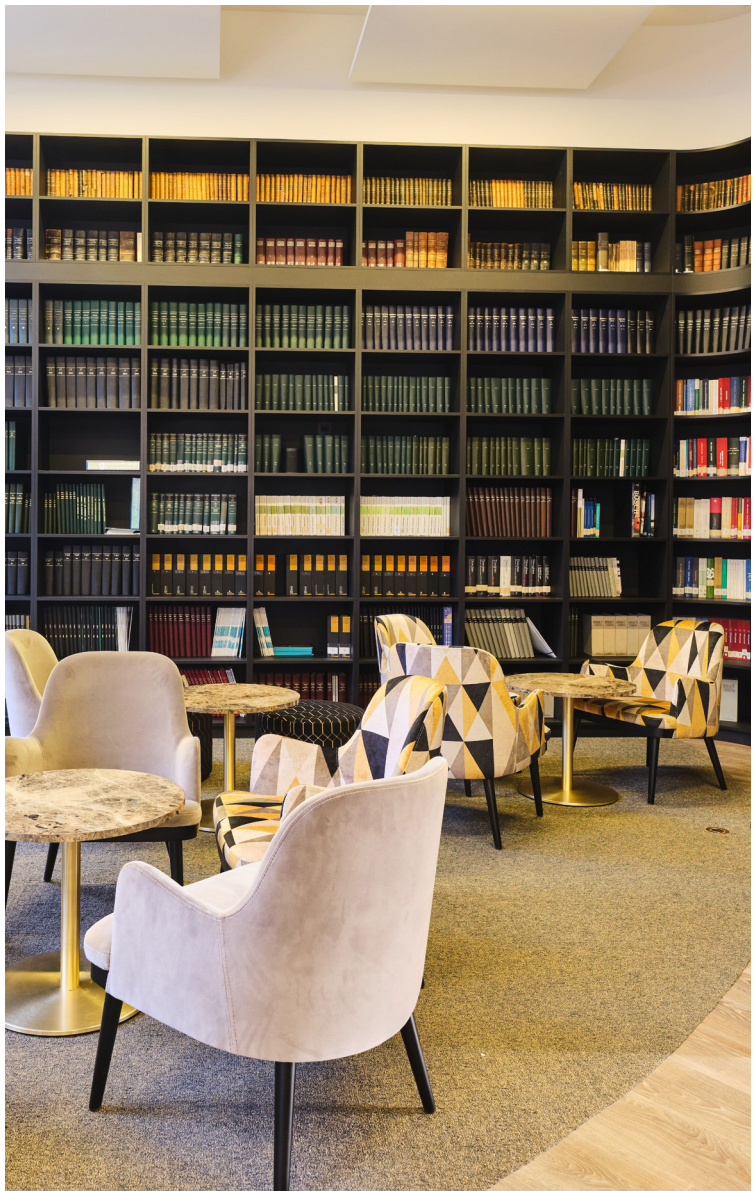
The port of Antwerp is the largest seaport in Belgium and the second most important in Europe, after Rotterdam. Last year the port of Antwerp had a throughput of more than 235 million tons of goods. This comes down to a lot of work which therefore implies a lot of rumbling bellies at noon. Schaft is a public restaurant specifically for dockers. It puts the traditional dishes of the *'gaarkeuken'* back in the spotlight. Classic recipes in a contemporary and stylish look at democratic prices.

design: Axel Devroe
photography: Studio PSG



GSJ ADVOCATEN

Antwerpen



GSJ advocaten recently moved to "Post X" building, a contemporary and sustainably conceived site. The potential to tailor their new offices in combination with the excellent accessibility was the basis for their decision to move. The interior has been inspired and driven by quality. The new infrastructure has everything to please both clients and staff and fits into the plan to make their organisation and legal services future proof.

design: Alternativ
photography: Alternativ



STADSBADER

Harelbeke



As a family business Stadsbader was founded in 1946 in Harelbeke. Today the group is active on a daily base at around 125 sites in Belgium and neighbouring countries. As a contracting company, Stadsbader primarily led to a strong position in the public and industrial sector. The objective of the group is to ensure maximum customer satisfaction through a high-quality, timely and correct implementation of the projects, with specific attention for all parties involved in the Triple P (People-Profit-Planet). The interior architect embraced the triple P also in her design of their headquarters. A space where one can relax and meet, built with ecological materials.

WE CARE

Once the project is up and running, our logistics department takes over and makes sure that everything is organized as planned. Orders are placed, fabrics are sent, at the sites of the different manufacturers the specific models are being produced. When the goods are ready, they get well packed for shipment and our international forwarders get notified to organize collection.

By arrival at our central warehouse, all the goods are quality-checked and get sorted out to be stocked until the planned delivery date. Once all the goods of a specific project have been delivered, our logistics team takes contact with the client to organize the final delivery.

To optimize the delivery, we preassemble some of the items in our warehouse. The rest of the goods, mostly in cardboard boxes, is being unpacked on site for optimal protection during transport. We have our inhouse truck and driver and technicians for current deliveries, and a professional logistic partner with specific vehicles, tools and skilled movers and technical staff.

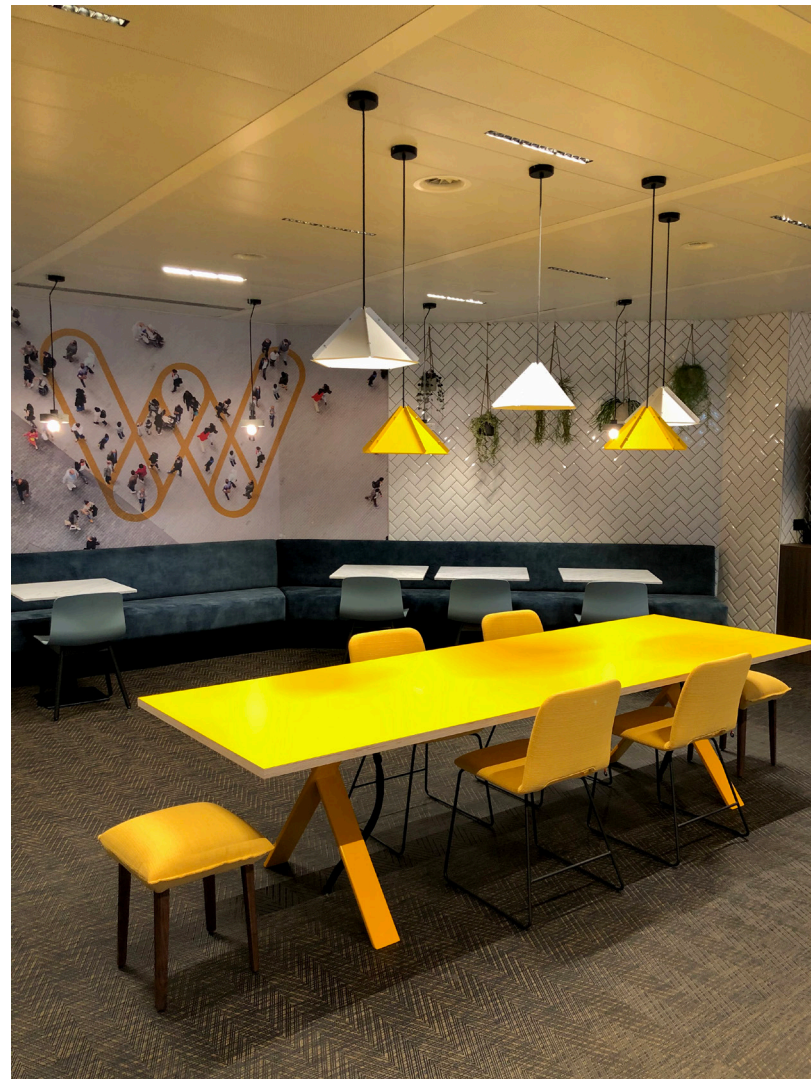
On site, everything is optimized in time. The furniture gets unpacked and is carefully placed by plan. The last few pieces get assembled and all the packaging materials are taken back. After the final check and approval of the client, we leave you quality furniture that you can enjoy for many years.

If by any chance service would be needed, we are there because we care.



WORKERO

Brussel



Embracing the speed of change, Workero is convinced that the most successful companies of the future, will not be the largest, or even the ones with the smartest employees. It will be those that are best connected. Workero enables collaboration within companies by sharing office spaces, providing an online community.

design: Detail Concept
photography: Bram Verheyen



JET IMPORT

Lauwe



The ambition at Jet Import is to play a trendsetting role in the world of premium beverages and healthy snacks as an independent distributor in the Benelux. This trendsetting role has been incorporated throughout the interior of their new offices. Done are static workspaces, here come cosy spaces to work in a more easy-going environment. Just take your laptop with you and find a nice spot in a sofa, or co-work in team at the spacious tables around the office.

MELISANA

Evere



The interior for the new offices for Melisana was inspired by their products. They make over-the-counter remedies and natural cosmetics. Creating health and well-being for people with products that guarantee the highest quality for the benefit of the users. This is translated to the integrated branding and the soft natural colours from the interior.

design: Eef Debeuf
photography: Robin Van den Acker

FOSBURY & SONS

Brussel / Antwerpen



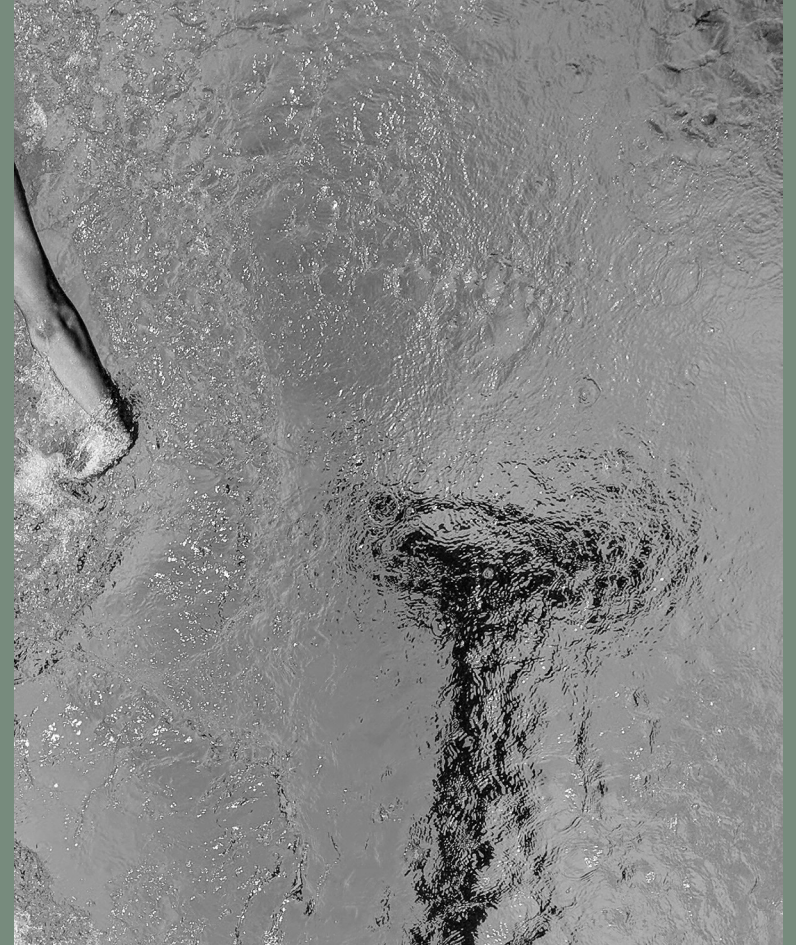
'Not your ordinary office' is their quote, and you can clearly see why. Fosbury & Sons is an antidote to the office of the past. They are here to make a difference. In a war for talent, workspace quality becomes a number one priority for companies. We no longer expect a table and a chair, but rather a complete experience that allows us to perform at our best. Fosbury & Sons is based on the digital nomad life, the strength of your daily workspace quality, general life quality and the light need of people to belong to a group. Coworking is the future, well-being is the new welfare.

design: Going East
photography: Frederik Vercruyse

SPORTS

AND

LEISURE



LUX

Kapellen



Lux is not just an ordinary event room, but an architectural and technical masterpiece. The building, with copper-coloured tiles and lots of glass, must become a new anchor point in Kapellen. The large room is a multipurpose space where performances and concerts can be given in the most comfortable circumstances. Without the tribune the room has a standing capacity up to 700 persons. In addition to Lux and Biz, which is a smaller event room next to it, there is a spacious foyer ideal for a drink after the performances.

design: Cordeel
photography: Studio PSG





BOA KARAOKE

Brussel

114

Boa Karaoke is an experience on its own. At the front you have a nice and cosy metropolitan cocktail bar with all the comfort you can expect. In the back however there are private karaoke rooms, all in their own theme with according furniture and materials. It's colourful, it's fresh, it's fun!

photography: Luc Viatour





MAISON DE LA POSTE

Brussel



The Maison de la Poste with its iconic historic architecture at the Tour & Taxis site offers 15 inspiring heritage event rooms from 50 to 600 participants. Steeped in history this former goods train station has been transformed into the most inspiring conference and events centre in Brussels. A place where people from all over the world meet to share ideas and create stories. In the Attic, the theatre's furniture was developed and designed to measure this specific project.

LAGO

Gent



Lago swimming paradises welcome more than 2.5 million visitors each year. More and more people are looking for a pleasant relaxation, for a nice way to escape from the daily fuss. Lago stands for a total experience for the entire family, young and old. After a day of water fun one can blow of some steam in the Rest-eau-café for a quick bite or a tasty seasonal dish.

design: Artabel
photography: Philippe Van Gelooven

PRIVATE



HOUSE SA



House SA is a bright and spacious home with a minimalist design and a touch of mediterranean influence. For the interior some organic and natural furniture pieces were selected to underline the southern atmosphere.

design: Jessy Van Durme
photography: Piet-Albert Goethals





HOUSE S

124

The goal in the renovation of this private project was a contemporary interior with no compromises. The interior is decorated with the very best available, where a richness of materials and prestigious collections could make a beautiful whole. An authentic farmhouse was transformed into an atmospheric, warm and contemporary home where the relationships between the environment and the interior play a major role.

design: Trui Vermeire
photography: Sylvie Vandewalle



HOUSE A



This villa has a clear relation with the surrounding nature. Big glass panels and open spaces create an amazing airy feel. This reflects in the choice of furniture, natural luxury materials and soft tones. Armchairs and barstools from the same family in walnut and brown aniline leather finish, accentuate the coherent ensemble. The contemporary yet timeless furniture completes the stunning architecture and will stand the test of time.

design: Linda Coart
photography: Jaro van Meerten

HOUSE OA

128

Craftmanship is central in this wonderful project as you can feel in every room of the house. The kitchen has a huge slab of pink marble, perfectly accompanied by some marvellous stools in a compatible fabric. The dining room has a wall-to-wall carpet with a distinctive flower pattern which contrasts beautifully with the view over the greenery outside. The central piece is a custom made table that hosts up to 14 guests.

design: Wendy Verstrepn
photography: Willem Rosier





de compagnie

Inspiring furniture for home and contract

Puursesteenweg 313
2880 Bornem
T: +32 (0)3 889 50 51

info@decompagnie.be
www.decompagnie.be

instagram: de.compagnie
facebook: decompagniebornem

