



**IN  
SPI  
RE**

de compagnie  
Inspiring furniture for home and contract

# de compagnie

We source and tailor contract furniture for hospitality, corporate and private projects.

Together with you we dream, define and deliver the places where you eat, sleep and work.

De compagnie is first a family story and we are proud of living today by the same values we started with, 20 years ago. We since grew across Belgium and internationally, around the belief that with the right level of collaboration and passion, no project is too big.

From the first look at your plans to the last piece of furniture being delivered and installed, from your business to your home we come in and help you bring your dreams to life.

We care, and it shows.

# HOSPITALITY





# BISTECCA

Zandhoven



Bistecca provides proof that a grill restaurant can offer a refined menu. The Josper grill oven takes centre stage on the menu. A refinement of powerful elements also features in the interior, with a beautiful balance between hard and soft textures. A combination of a classic looking background with contemporary trendy accents of velvet and black. The longterm cooperation with Chris & Inge always results in a special and warm interior. From De Kaai in Boom, De Zaatman and Bellavista in Temse to Il Forno and Bistecca in Zandhoven.



# SALONS VAN EDEL

## PROJECT HIGHLIGHTED/

Salons van Edel has been a confirmation and a highlight in this long term collaboration.

The beautiful castle at Hof ter Beke in Wilrijk was saved from destruction, and became the ideal location where Salons Van Edel provided proof that past glories can be revived with a contemporary touch. The diverse rooms have been restored into spaces for parties and events, offering a first class service in a breathtaking environment.





De compagnie already serviced a number of projects for this client and once again were able to provide a suitably minimalist solution for the Salons Van Edel. The following pages feature several previous projects for this client.

# FESTIV

---

Bar Festiv is located between the Lux and Mon restaurants. It is a stylish bar where you will find exquisite cocktails and aperitifs.



# MON

---

During Lux's renovation, this brand new grill restaurant was opened next door. A contemporary and stylish interior features a modern brasserie kitchen offering home-grown grill and beef products.



# LUX

---

Restaurant Lux has been a fixed value in this area for many years, and was transformed with an extreme makeover in cooperation with A.I.D. architects. Unequalled luxurious gastronomy.





# THON HOTELS

Europe

Our work for Thon Hotels took us all the way to the far north. Colour and atmosphere are key for his Norwegian hotel chain.

After an initial meeting with Norwegian architect Trønd Ramsoskar in Brussels we have collaborated on various hotel projects in Norway including the Thon Hotel Oslofjord and the Thon Hotel Opera. The chain repeatedly opted for playful, colourful palettes for materials and accessories, resulting in each interior being a source of enjoyment for customers.





# *HERTOG*

## JAN

Zedelgem

“ Topnotch interpretation of personal  
customized contract furniture.”

The Hertog Jan story started when Gert De Mangeleer and Joachim Boudens first met at Bistro Hertog Jan in Bruges. The two young men soon discovered they were soul mates, and it became clear that their collaboration had the potential of a very promising future. The old Hertog Jan establishment was initially more a 'brasserie' kitchen. But soon after Gert and Joachim took over the restaurant in 2005 they made their mark on the new menu, and they were awarded their first Michelin star.

A second Michelin star followed after a thorough refurbishment of the building. But Joachim and Gert, both young and ambitious, wanted more. Finding a more idyllic place for the restaurant was an important aspiration.



“The transparent character of the design helps establish the link between inside and outside.”

They started looking in the green zone around Bruges, and found an old farmhouse that would be a suitable venue. But not long before signing the sales agreement Gert came across an old barn in Zedelgem, a listed building in the middle of the countryside. He was thrilled and invited Joachim to come and have a look. It was love at first sight. This is where the new Hertog Jan would find its new home.

Discovering that unique location became the start of a long and exciting journey. But transforming a listed building into a restaurant turned out to be less obvious than first thought, as the barn was located in the middle of an agricultural area.

But Gert and Joachim saw the property as an opportunity to make the Hertog Jan fully self-sufficient in vegetables, fruit, edible flowers, herbs and spices. One of their first interventions was the construction of a beautiful smallholding including greenhouses to grow more than 160 varieties of tomatoes. With this Hertog Jan officially installed an active agricultural activity in an agrarian zone. It made a perfect fit in its environment, which was not only an important factor for the licensing authorities, but also for Gert and Joachim themselves. It completed their vision serving honest, clean products from their own garden.

More thought was needed for the actual restaurant and kitchen. In consultation with architect Dries Bonamie, it was decided to organise the restaurant hall in a new annexe to be built alongside the old barn. Wood and brickwork were used as a reference to the old materials of the existing buildings.



Stefan Schöning  
*designer*



Gert De Mangeleer & Joachim Boudens  
*entrepreneurs*

The same clean approach also needed to be reflected in the interior furnishings. ‘Clean, elegant and pure’ were the key words to describe the chair de compagnie had in mind. And as it was such a particular project, why not create an exclusive Hertog-Jan chair? With our basic idea we approached Belgian designer and friend Stephan Schöning to develop a chair made from reversed saddle leather on a restrained steel frame. The transparent character of the design helps establish the link between inside and outside, with the furniture becoming an integrated part of the whole concept. With Indera as a producer for this product, we managed to make it a 100% Belgian project.

The chair’s subtle design was much appreciated by the restaurateurs from the outset, and it remains a perfect complement to the pure architecture.



# ROYAL YACHT CLUB BELGIUM

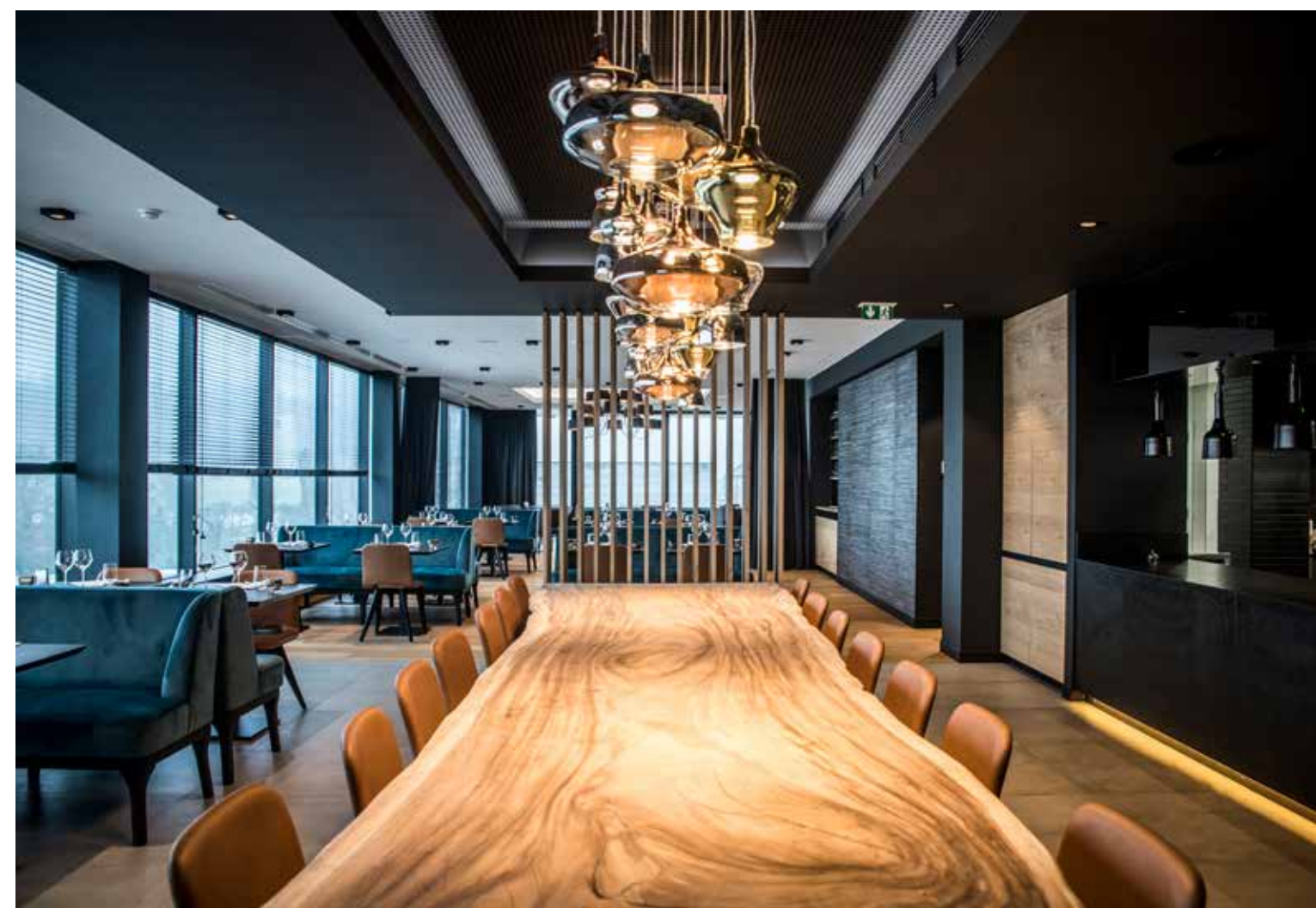
Antwerpen

The R.Y.C.B is a recognised sports club which promotes and supports the sport of sailing for everyone. As owners and operators of marinas in Belgium and the Netherlands, the R.Y.C.B. offers extensive facilities needed for sailing and motor yachts.  
For this project, de compagnie provided the indoor and outdoor furniture for R.Y.C.B. customers to enjoy a comfortable time at the riverside.



# R HOTEL EXPERIENCES

Remouchamps



R Hotel Experiences is located in a green oasis at the foothills of the Belgian Ardennes. An experimental hotel which makes full use of the best it's location has to offer. The four-star hotel offers quiet wellness weekends, culinary experiences and mountain bike trips for the more adventurous crowd. The main challenge of this project was to find a balance between design considerations and achieving the warmth and cosiness of a chalet, an express wish of the client. After much research, we obtained the confidence of Mr Compère to allow us to finalise the task. A special assignment with a fantastic outcome.



# HAVICREM - DAELHOF

Zemst



Zemst-based Havicrem-Daelhof's first concern is to allow families to say farewell to a loved one in an atmosphere of quiet and comfort. The sober architecture offers serene white spaces where the furnishings must provide the required warmth and a safe feeling in the interiors. Soft colour touches and warm wooden accents were chosen for the furniture. The ceremonial space required a sober but comfortable series of benches. Together with Belgian furniture manufacturer Indera, we developed a made-to-measure solution. A comfortable sofa was transformed into a functional bench where families can peacefully say a final goodbye to their loved ones.



# *HOTEL U*

More than just a hotel, Hotel U is a place for meetings, a spot where you can spend time at any hour of the day, an 'Experience Hub' on Antwerp's 'Het Eilandje'. Initiators Hans Otten and Viki Geunes with their spouses Viviane and Colette, found their inspiration in global cities such as Berlin, New York and London.

## PROJECT HIGHLIGHTED/

Hotel U is the ultimate Experience Hub of Antwerp's new hip area 'Het Eilandje'





The interior concept was the work of Karine Ribbens of April One design agency, who won the pitch to bring this project to its full potential. She gave her heart and soul and the result is this outstanding achievement.

# ALFONS SMET RESIDENTIES

Dessel



Alfons Smet Residenties in Dessel understand that quality of life is key, especially in the context of a serviced flats complex. The solid but aesthetic architecture offers individual care flats and all the accompanying services. A beautiful shared garden surrounds the complex which allows the people to enjoy a green view and a walk in the garden.





# DE NIEUWE KAAI

Turnhout



De Nieuwe Kaai offers proof that a serviced flats complex does not need to be cold, sterile and grey. In stead of a clinical atmosphere there is the luxurious feel of a hotel. Fully made-to-measure for the older generation, it offers all the required facilities. Together with Cathérine Meukens, we provided the furnishings with warm shades and refined textures, aiming for maximum comfort and ergonomics.



## PROJECT HIGHLIGHTED/

Cherry on the cake  
after more than ten years of  
partnership.



More than ten years ago we met family Michiels when they were renovating the beautiful "Brasserie du Prince d'Orange". Together with Brussels based architect Esther Gutmer, Mme. Michiels was looking for the right partner to fulfill their furniture needs. We will never forget her enthusiasm at her first visit to our, at that time, modest showroom: "This feels right, I am going to work with you guys!"... This first cooperation resulted in us working together in many of their future projects. On the next page are three of our more recent collaborations.

# C h e z L u l u

---

“Chez Lulu” is a French Belgian bistro offering a simple, authentic and rich cuisine. Its warm interior with a bronze colour pallet and cosy features makes it both an elegant and comfortable dining room.



# T r a t t o r i a b y R N

---

The best of Italy by RN! Charcoal baked pizzas, antipasti and homemade pasta in a beautiful black and white setting with a nine meter long Chesterfield as the masterpiece.

# B r a s s e r i e R N

---

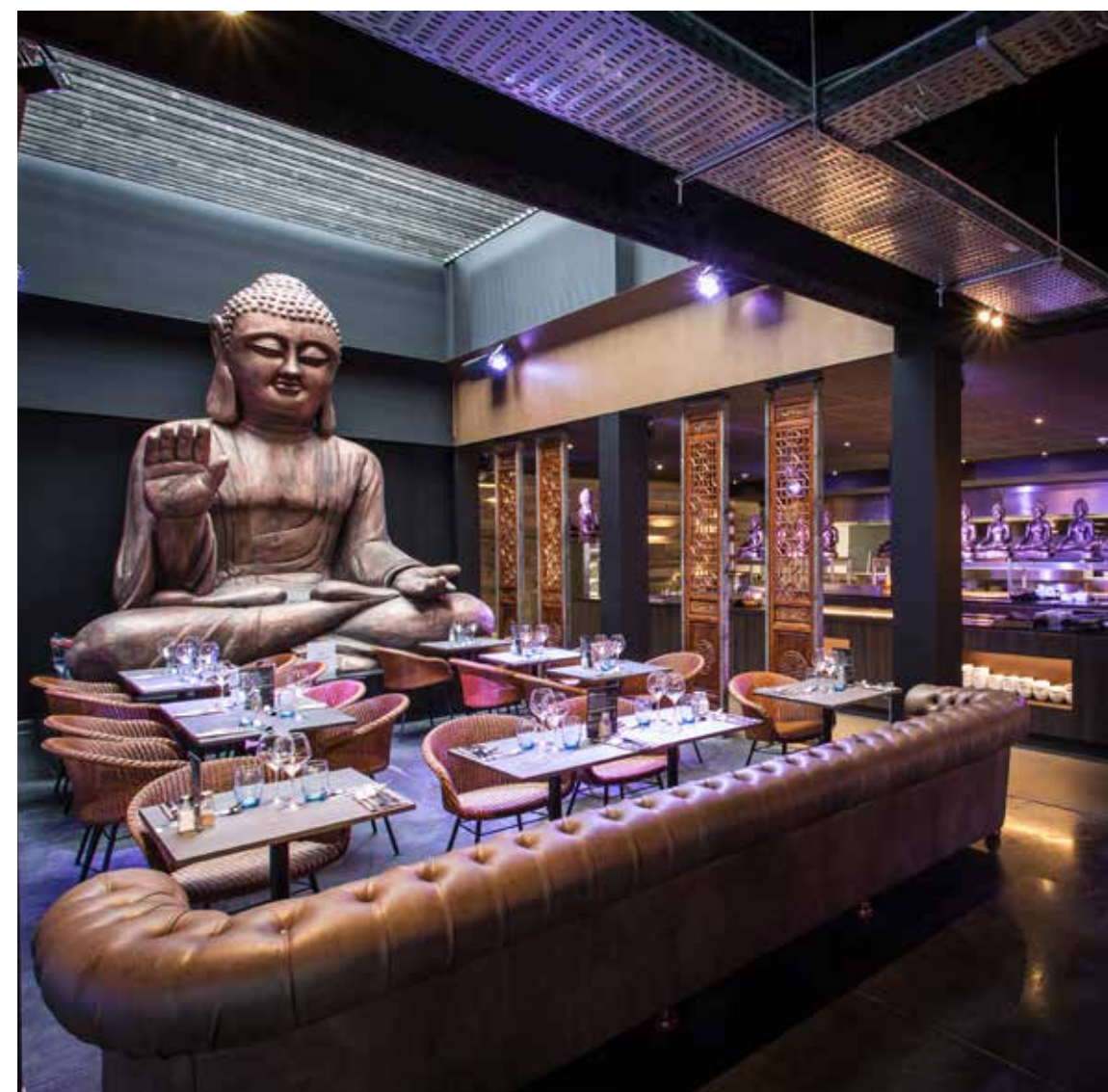
The ancient Rédimé farm that used to be an art centre, became the location of a brand new brasserie. A stylish and cosy interior with a view on the “roisserie”, the masterpiece of the open kitchen, is a feast for the eyes and taste buds.





# WOK DYNASTY

Boortmeerbeek

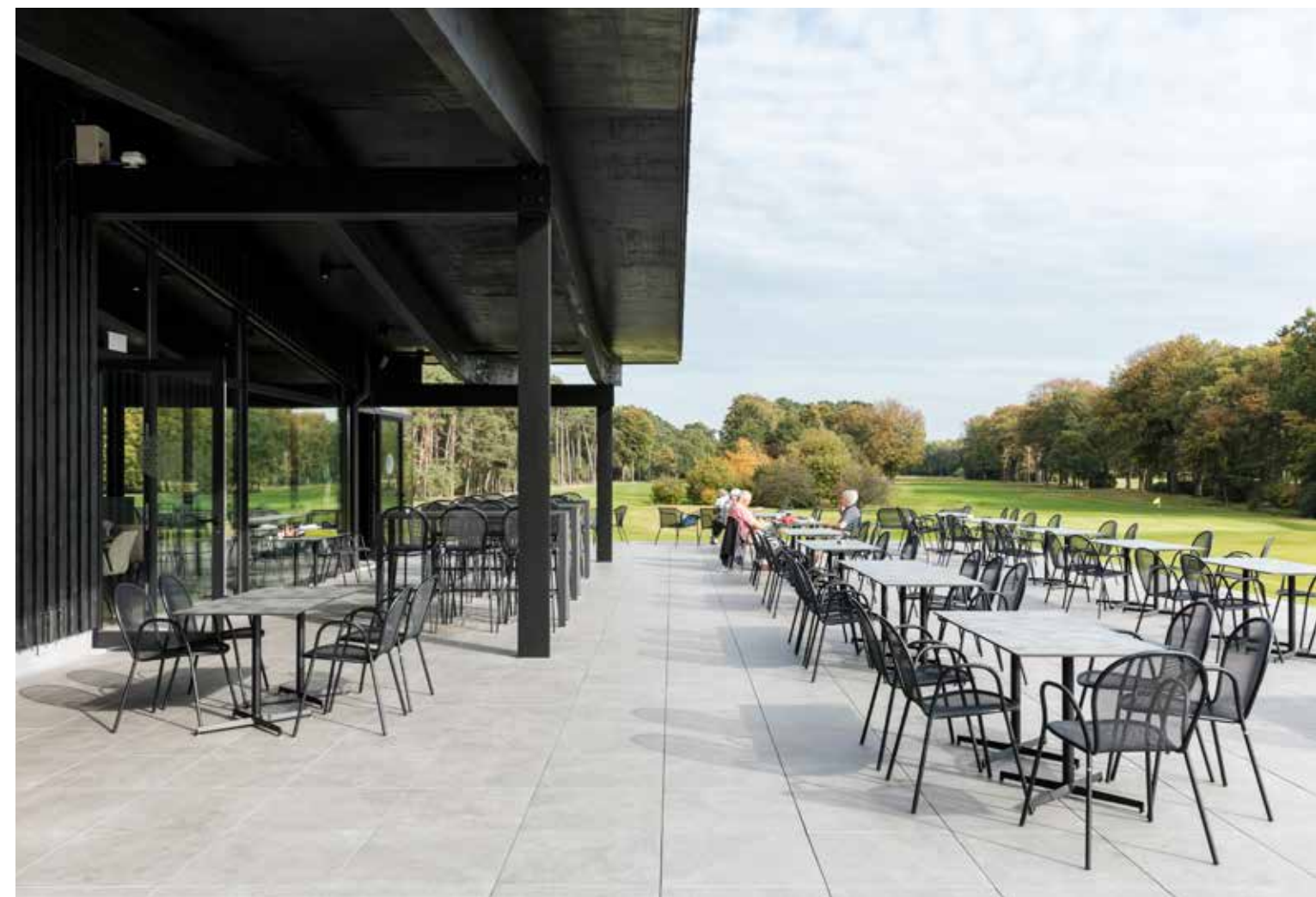


After the success of their prestigious Ming restaurant in Leuven, Chinese entrepreneurs Wu Chang Ying and Pak Peh-Fo decided to open a big wok restaurant in Heverlee. The first Wok Dynasty was such a hit that soon several new projects followed. After Aartselaar, Sint-Martens-Latem and Overijse, Boortmeerbeek was recently added to the list of venues. Meanwhile at the home base in Leuven Ming has been transformed into Bar Nine, a place where funky cocktails are combined with delicious finger food.



# RINKVEN GOLFCLUB

Schilde



The Antwerp International Golf and Country Club Rinkven is hidden away in the green Voorkempen area, offering 36 holes over 2 courses. The club purposefully aims to offer its members a quality service, to provide them with a fine sport and social experience. The clubhouse is an essential component and integrates the necessary facilities, including a bar and a restaurant for members to meet and discuss their golfing rounds. Working with the architects, the interior designer and a construction committee, we provided diverse seating and lounge corners in a warm colour palette which contrasts nicely with the green grass of the courses. Homely and comfortable, colour and luxury set the tone and subtly dress the strict architecture. Now, twenty years after the first collaboration, we had the pleasure to work together again on the installation of the brand-new clubhouse.

# CORPORATE





# TELENET

Mechelen

Telenet in Mechelen tasked Polo architects with the development of a site, the design of a new office building as well as the refurbishment of the existing buildings. They purposefully opted for mixing different functions to benefit one another. The atrium, for instance, becomes not just a circulation zone but also a place for encounters and informal meetings.

The restaurant zone was opened to avoid an institutional 'canteen' feel. Functionally and visually, the aim was to translate the dynamism of the company into the interior. Honest, warm and contemporary materials greatly contribute to achieving just this.

For the public spaces and the hospitality units, Polo architects appointed Eef Debeuf as interior architect. After many years of experience with Alken-Maes, she knows as no other how to turn a canteen into a space where people like to come together.

The team collaborated to choose the right materials and collections, furnishing the spaces with the right furniture that reflects the vision of the architect as well as the Telenet company itself.





# RODE KRUIS

Mechelen



The Red Cross commissioned Antwerp-based Polo architects to design a new building for their blood service, alongside their head office in Mechelen. This new building will house services for the collection, research and delivery of blood products for use in hospitals. A clear structure is based on two volumes, one horizontal and one vertical. The vertical volume houses the offices and laboratories in a generic and flexible arrangement, which allows the building to adapt to changing needs. The horizontal block consists of a closed base which houses the storage and care library. Level one houses a multipurpose space, a cafeteria and a blood collection area. In collaboration with Polo, we set up an appropriate furnishing concept with strict and functional design furniture.





# TUI

Belgium

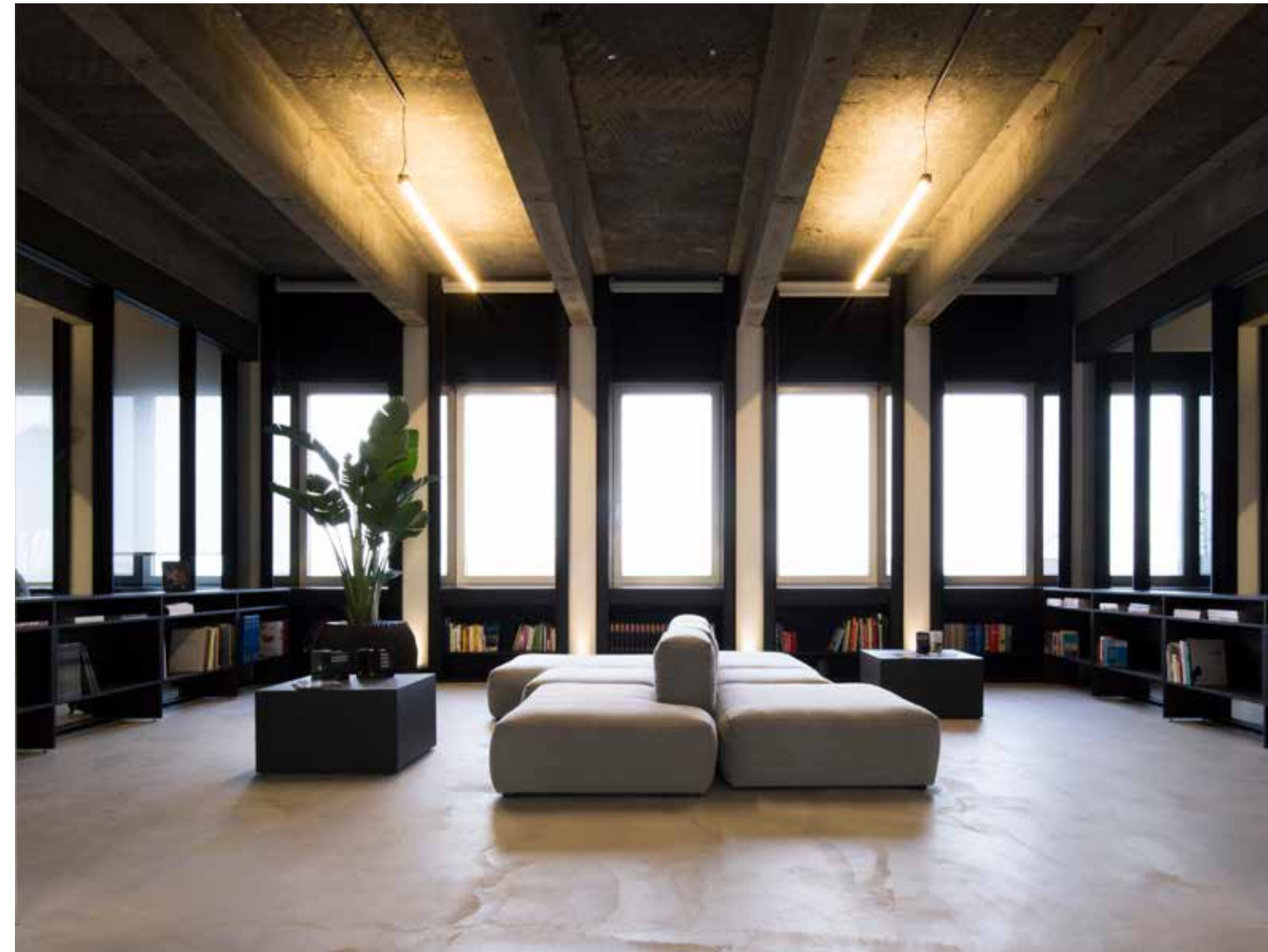


In 2016 Belgian tour operator Jetair decided to double its sales offices in Belgium. During our collaboration Jetair transformed into Tui and along with its new image we developed the new furniture concept. Under the form of a framework contract we are providing the furniture for the 130 Tui offices in Belgium.



# KAN DESIGN

Antwerpen



In the well-known Watt tower in Antwerp Co-Studio interior architects were tasked to design the new offices of Kan Design, a creative office developing brands, products and experiences. The functionality of the office furniture combined with the cosiness of the lounge area makes this office the perfect operating base for this creative bunch.



# AUTODIALOG

Wijnegem



Autodialog knows better than most that digital and service design are increasingly present in the general business world, including the automotive sector. Autodialog offers an online platform which connects dealers, car manufacturers, drivers and third parties. It also facilitates the communication between all parties. They chose Axel Vervoordt's prestigious Kanaal site as the location of their new head office. Developed by architects Coussée and Goris, one of the units was furnished in cooperation with interior architect Katrien Doms. A dark, warm atmosphere with rich materials and earthy textures define this space. Think velvet, brass and wood textures.



For this prestigious project, we were tasked with providing a suitable suggestion for the furniture components. This was a unique opportunity to use the rich materials, warm textures and subtle colour palettes of the Baxter brand. After a visit to the Milan Furniture Fair and the Baxter showroom, the client was enthused enough to ultimately make this a 100% Baxter project.



# PRIVATE

# VILLA SOLEIL

Cassis | France

“The French Riviera translated in the interior of this authentic Villa by the seaside.”

58

In the beautiful village of Cassis, France one of the oldest houses of the little town was recently transformed into a fine and luxurious holiday house. In the construction the finest craftsmen used the best materials to realise this project. For us the challenge was to tie this project together on the same level as these skilled people and exquisite materials.



Together with the owners we decided to bring in contemporary quality furniture in combination with some classical elements. In the dining room the huge table in Ovangkol (African walnut) is the eye catcher. Pure in its form and material. In contrast the kitchen table is a more classical design combined with Thonet chairs. The contemporary but timeless furniture completes the stunning architecture and will stand the test of time.





# PRIVATE SHOWROOM

Bornem

The boundaries were stretched even further for this new private showroom. The aim was to have the very best available, a project where one could go all the way, where a richness of materials and prestigious collections could make a beautiful whole. An authentic farmhouse was transformed into an atmospheric, warm and contemporary home where the relationships between the environment and the interior play a major role.





The combination of collections, atmospheres and materials in this interior has become a harmonious blend which exudes warmth, cosiness and luxury.

# SHOWROOM

Bornem



**LET'S WORK TOGETHER .**

graphic design by Jessy Van Durme

Photography by Piet Albert Goethals, Katie Verkinderen, Sylvie Vandewalle, Studio Vercammen, Kristof Vranken.

**de compagnie**

Inspiring furniture for home and contract

Puursesteenweg 313

2880 Bornem

T: +32 (0)3 889 50 51

F: +32 (0)3 889 50 55

info@decompagnie.be

www.decompagnie.be



[www.decompagnie.be](http://www.decompagnie.be)